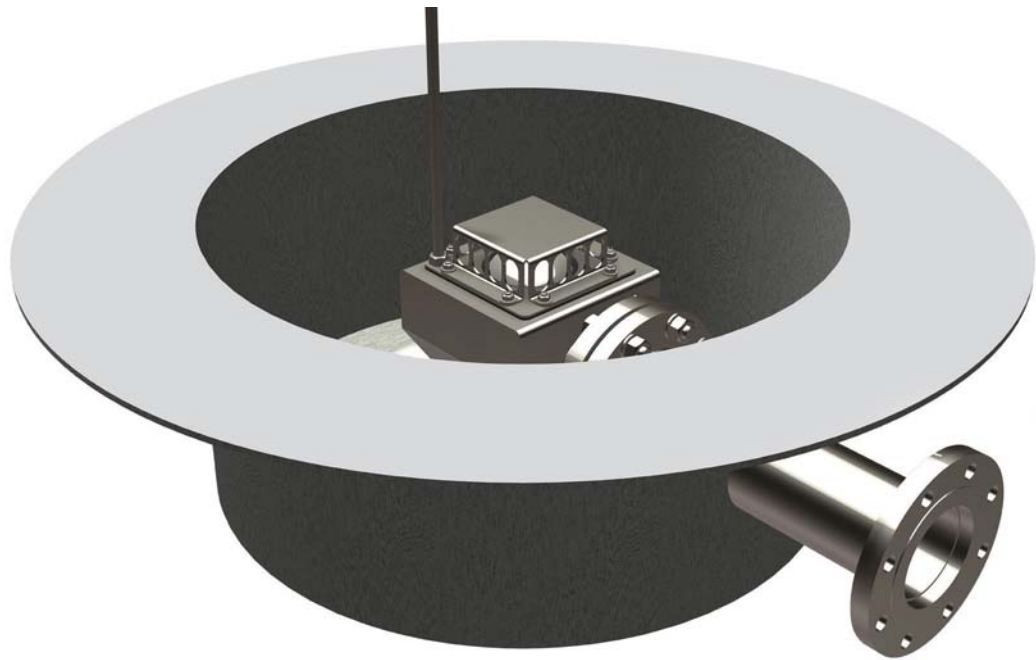




SUMPMASTM SUMP VALVES



The SumpMasterTM is a sturdy sump valve designed to prevent product flow onto external floating roofs from drain system failures. The SumpMasterTM addresses several problems with traditional check valves, including more effective sealing at the potentially lower pressures encountered during a drain system failure, and not restricting drain flow rates calculated during the design of the floating roof.

Key user benefits:

Backflow protection and peace of mind — the SumpMasterTM keeps your roof protected from product backflow in the event of drain system failure

Maintenance-free — corrosion resistant, stainless steel construction

Superior sealing capability — in the event of product backflow, the SumpMasterTM will seal more effectively than traditional systems. Over time, metallic-ball systems develop dents from normal movement, resulting in an uneven sealing surface. The non-metallic ball of the SumpMasterTM will not wear or dent, maintaining excellent sealing capabilities for the life of the tank

Fast and easy installation — easy bolt on / bolt off flanges

Custom designed — SumpMasterTM can be fit with the customer's choice of flanges

Key design features:

- Designed to operate effectively at very low backflow pressures as opposed to the higher pressures required by traditional check valves
- Vacuum release allows the check ball to release in the event rainwater backs up inside the sump. When the drain line is opened from below, the ball is allowed to fall and the roof allowed to drain
- Non-metallic ball for superior wear and corrosion resistance
- Stainless steel body for superior wear and corrosion resistance
- A unique steel cage keeps the SumpMasterTM free of debris
- Can be vertical or horizontal

Protecting your world, one tank at a timeTM

www.hmttank.com

KEY DESIGN FEATURES

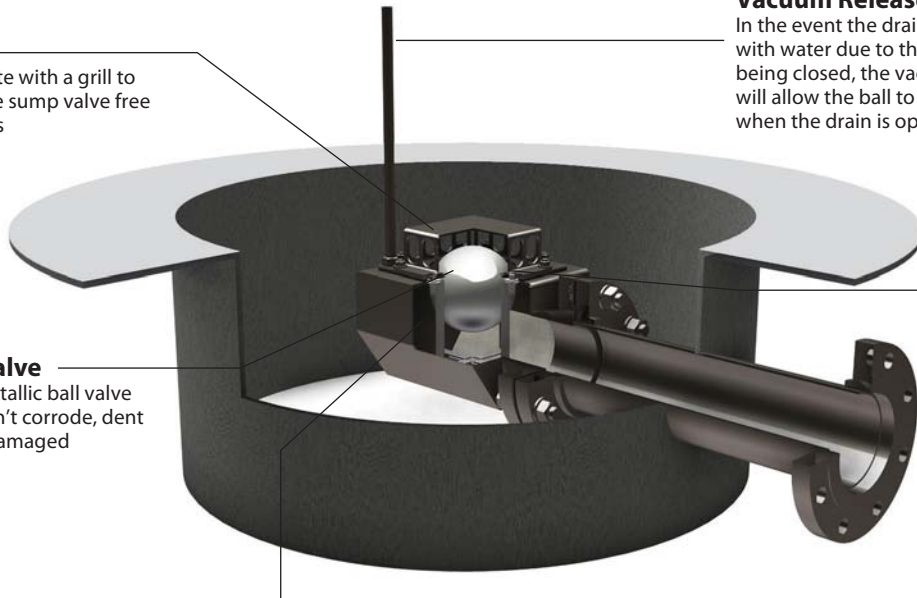
Lid
Complete with a grill to keep the sump valve free of debris

Ball Valve
Non-metallic ball valve that won't corrode, dent or get damaged

Vacuum Release
In the event the drain line fills with water due to the system being closed, the vacuum release will allow the ball to release again when the drain is opened

Rubber Gasket
For tight sealing and backflow prevention

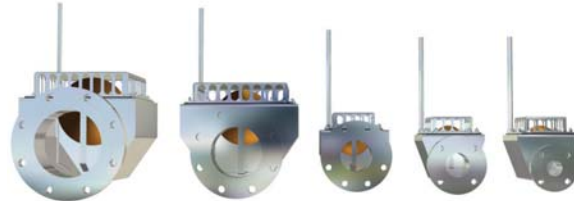
Stainless Steel Body
Engineered to last the life of your tank



DESIGN TYPES

There are two types of SumpMaster™ sump valves: vertical and horizontal. The sump valves are available in five sizes.

| Horizontal Sizes | Model |
|------------------|--------|
| 2" | T600-2 |
| 3" | T600-3 |
| 4" | T600-4 |
| 6" | T600-6 |
| 8" | T600-8 |



| Vertical Sizes | Model |
|----------------|--------|
| 2" | T601-2 |
| 3" | T601-3 |
| 4" | T601-4 |
| 6" | T601-6 |
| 8" | T601-8 |



ABOUT HMT

HMT is the global leader in aboveground storage tank solutions. HMT's global team of engineers, project managers and field personnel can assist with common challenges including ways to reduce emissions, optimize tank capacity, reduce stranded inventory and engineer a tank system that exceeds safety standards and extends maintenance intervals.

HMT's full suite of tank products includes: External Seal Systems - Internal Seal Systems - Drain and Floating Suction Systems - Geodesic Domes - Skin and Pontoon IFRs - Full Contact IFRs - Emissions Reduction Devices

HMT LLC | 24 Waterway Avenue, Suite 400, The Woodlands, Texas 77380
Ph: +1.281.681.7000 | Fax: +1.281.419.7689 | Locations worldwide

Visit us at www.hmttank.com

